



DUAL LATEROLOG - GR  
DENSITY - NEUTRON

Compact

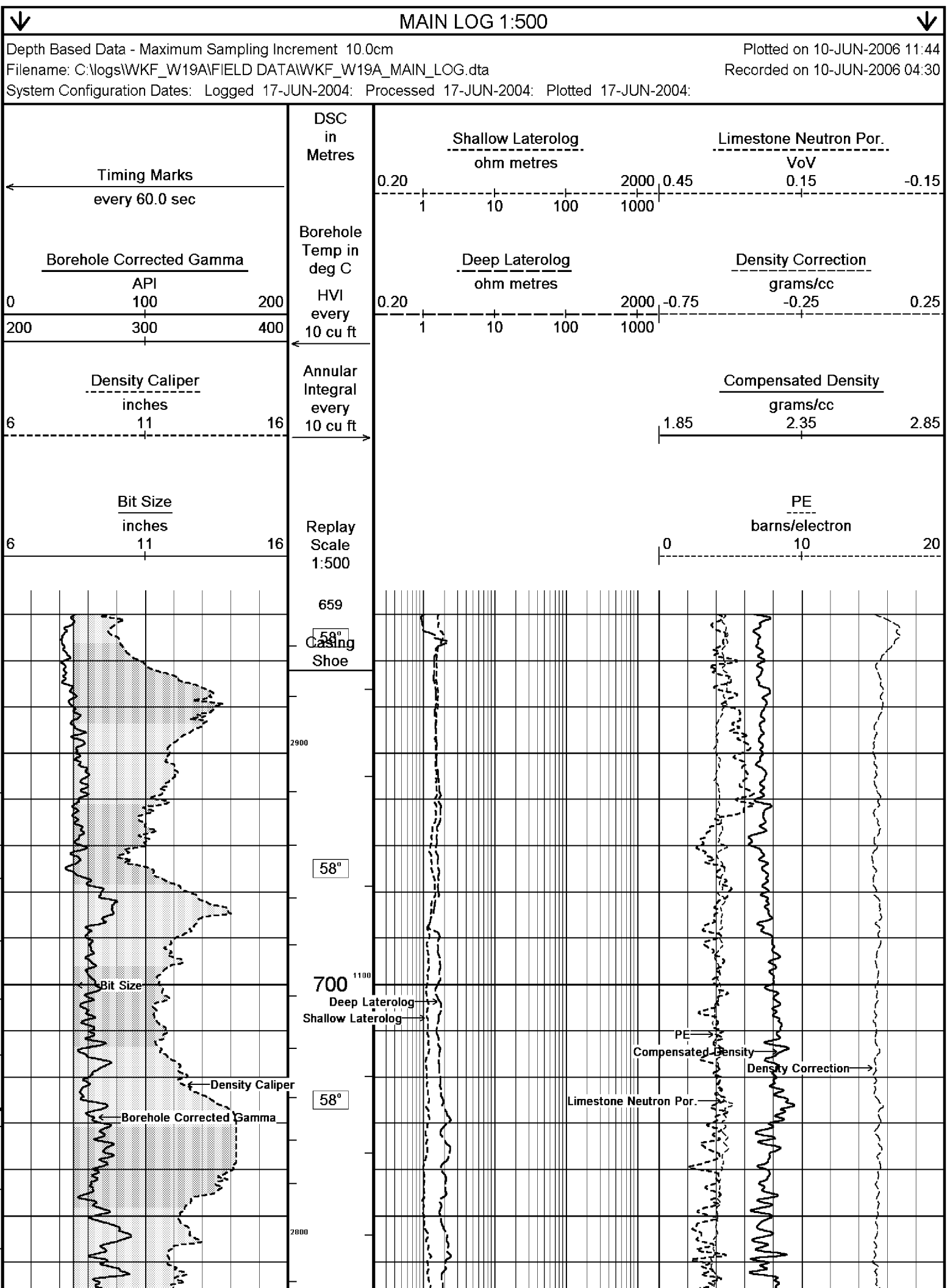
1:500 MD

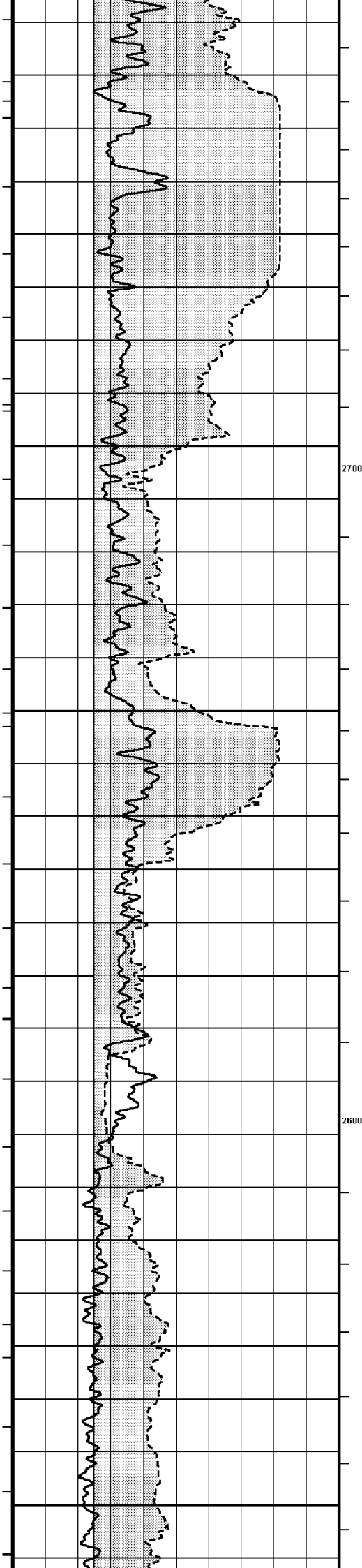
COMPANY				ESSO AUSTRALIA PTY.LTD			
WELL				WKF W19A			
FIELD				KINGFISH GDA94			
PROVINCE/COUNTY				BASS STRAIT, VICTORIA			
COUNTRY/STATE				AUSTRALIA			
LOCATION				S 38 35 34.833, E 148 6 19.318			
				N 5727806.791 m, E 596262.840 m			
				<b>FIELD PRINT</b>			
LSD	SEC	TWP	RGE	Other Services			
API Number				COMPENSATED SONIC			
Permit Number							
Permanent Datum L				, Elevation 0.0 metres		Elevations:	
Log Measured From DF @ 33.4m				above Permanent Datum		KB	metres
Drilling Measured From DF						DF	33.43 metres
						GL	-76.13 metres
Date	10-JUN-2006						
Run Number	ONE						
Depth Driller	2687.00			metres			
Depth Logger	2684.00			metres			
First Reading	2670.65			metres			
Last Reading	666.00			metres			
Casing Driller	666.00			metres			
Casing Logger	666.00			metres			
Bit Size	8.50			inches			
Hole Fluid Type	KCL/PHPA						
Density / Viscosity	1.13	g/cc	23.00	CP			
PH / Fluid Loss	8.80		3.40	ml/30Min			
Sample Source	FLOWLINE						
Rm @ Measured Temp	0.106 @ 25.0			ohm-m			
Rmf @ Measured Temp	0.085 @ 25.0			ohm-m			
Rmc @ Measured Temp	0.114 @ 25.0			ohm-m			
Source Rmf / Rmc	MEAS		MEAS				
Rm @ BHT	0.05 @ 79.3			ohm-m			
Time Since Circulation	37 HRS						
Max Recorded Temp	83.20			deg C			
Equipment Name	CWL						
Equipment / Base	1		SALE				
Recorded By	R L TENCH, B J R MOSS						
Witnessed By	T LOBO						
LAST CIRC	8/06 04:00			Last Line			

BOREHOLE RECORD				
Bit Size inches		Depth From metres		Depth To metres
8.500		666.00		2687.00
CASING RECORD				
Type	Size inches	Depth From metres	Shoe Depth metres	Weight pounds/ft
K-55	10.750	0.00	666.00	40.50

REMARKS
RIG: NABORS 453
5" SHUTTLE/MEMORY COMPACT OPERATION. CREW: R TENCH , B MOSS , B GOODWIN, M KOLCZE.
FIELD FINAL LOGS TO BE CORRELATED TO ANADRILL GAMMA LOG.
MAX. TEMPERATURE: 83.2 DEG C AT 2636 m MD MAX. INCLINATION: 37 DEG AT 665 m MD MAX. DOGLEG SERVERITY: 6.21 DEG/30m AT 696.25 m MD DEPLOYMENT ANGLE: 26.98 DEG
HVOL: 2890 FT^3 AVOL: 1120 FT^3
LOGGING SPEED 6M/MIN FROM TD TO 2439.2 M MD LOGGING SPEED 12 M/MIN FROM 2439.2 TO 1749.3 M MD LOGGING SPEED 6 M/MIN FROM 1749.3 TO 1519.3 M MD LOGGING SPEED 12 M/MIN FROM 1519.3 TO 1289.4 M MD LOGGING SPEED 6 M/MIN FROM 1289.4 TO 628.8 M MD

All interpretations are opinions based on inferences from electrical or other measurements and we cannot, and do not, guarantee the accuracy or correctness of any interpretations, and we shall not, except in the case of gross or wilful negligence on our part, be liable or responsible for any loss, costs, damages or expenses incurred or sustained by anyone resulting from any interpretation made by any of our officers, agents or employees. These interpretations are also subject to our general terms and conditions in our price schedule.





58°

750

58°

2700

58°

800

1000

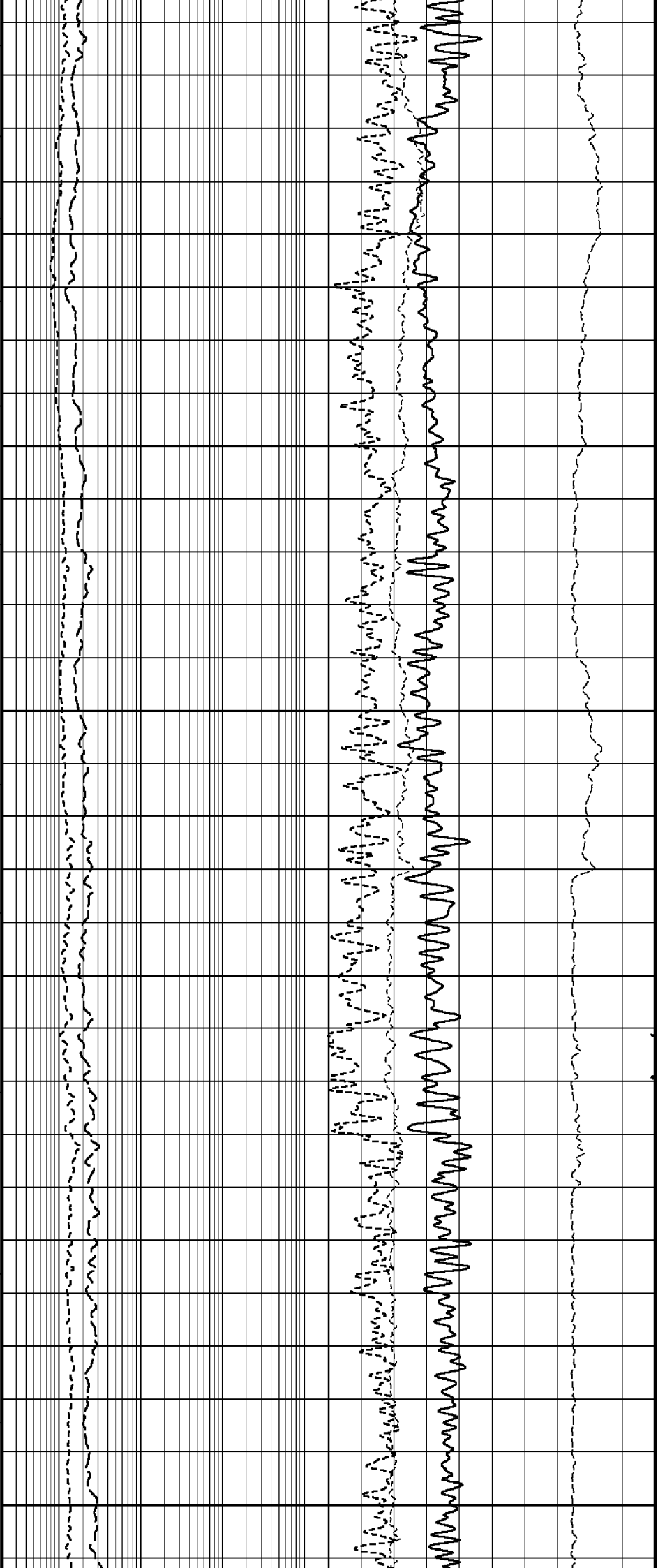
59°

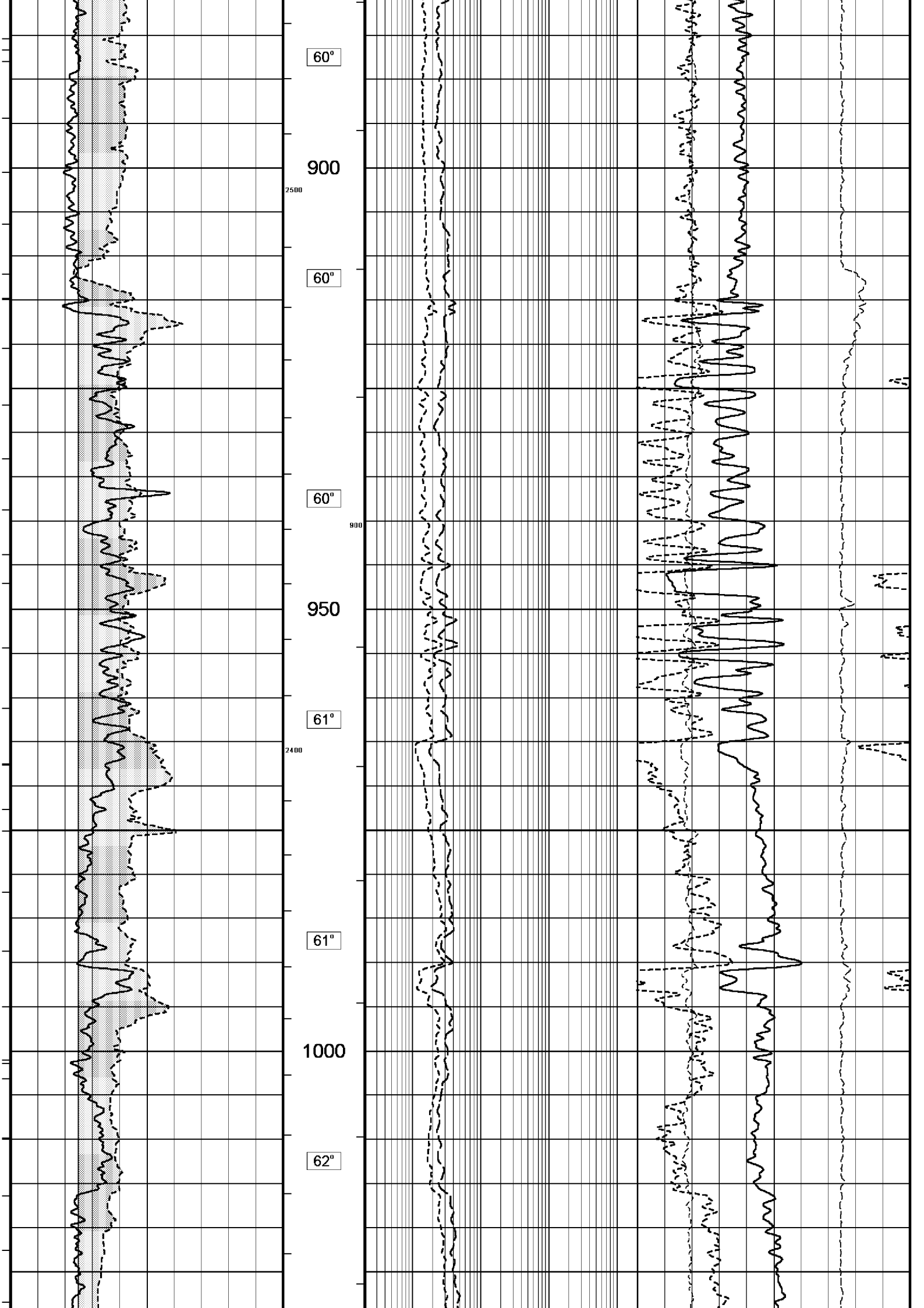
59°

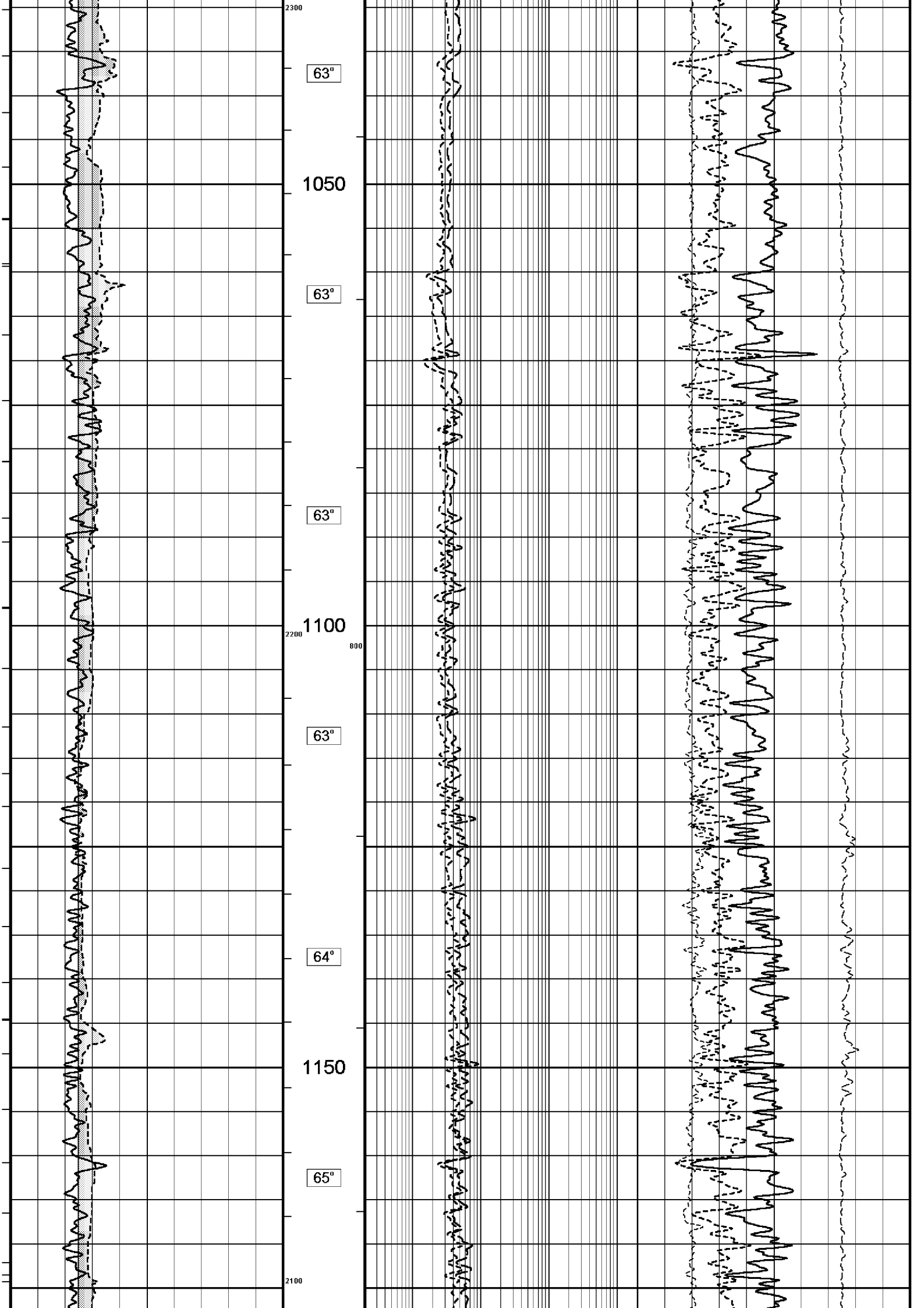
2600

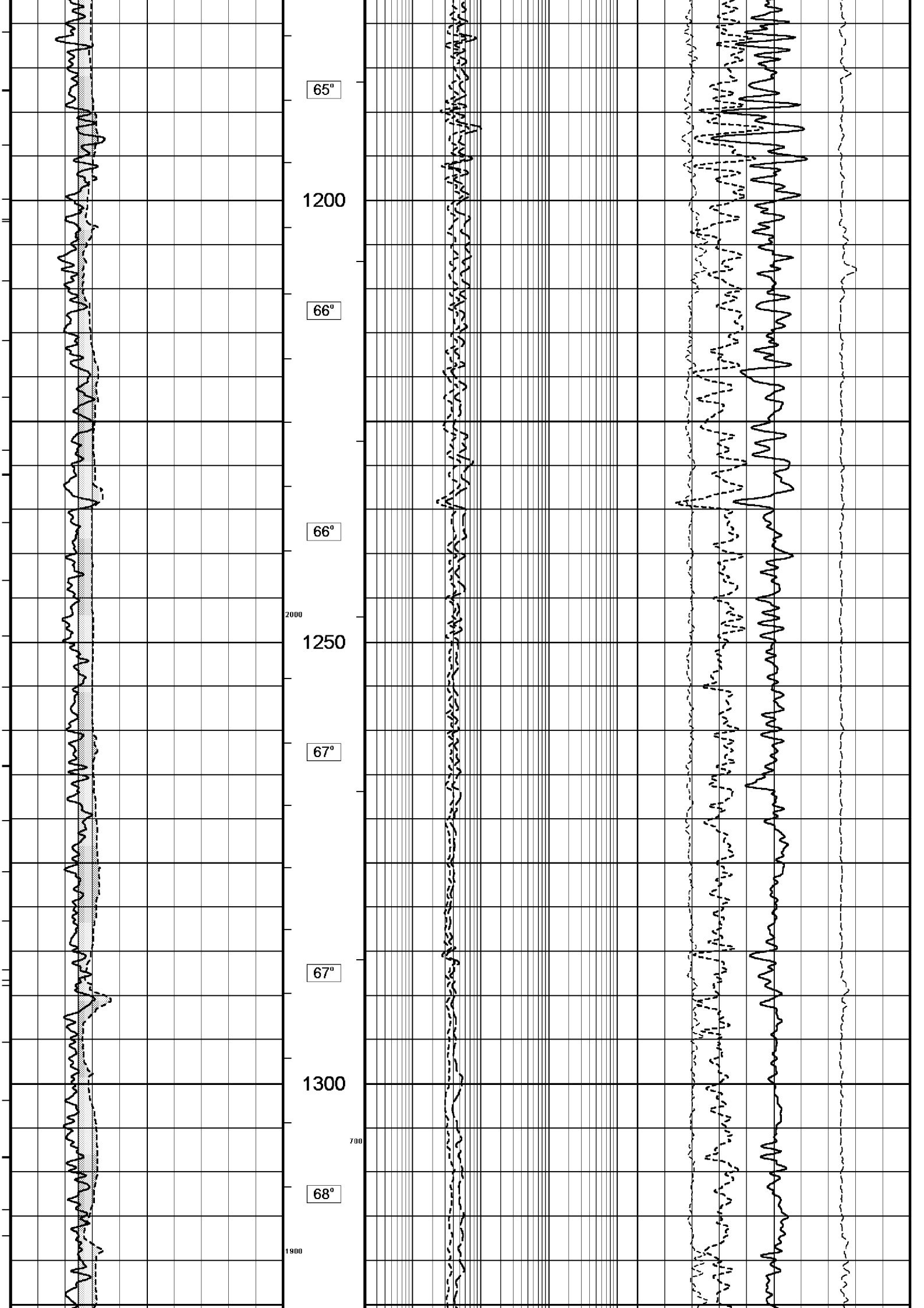
850

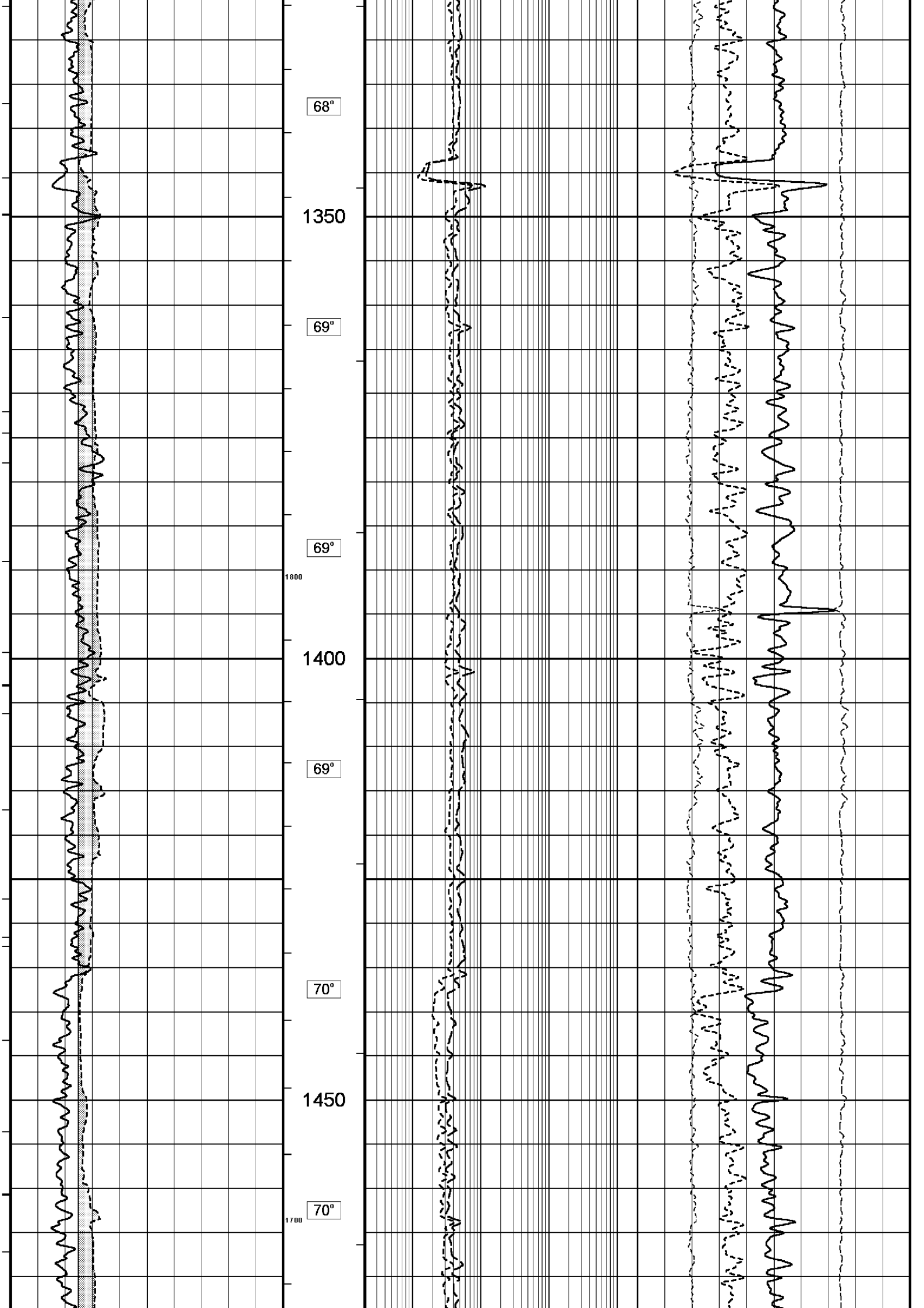
59°

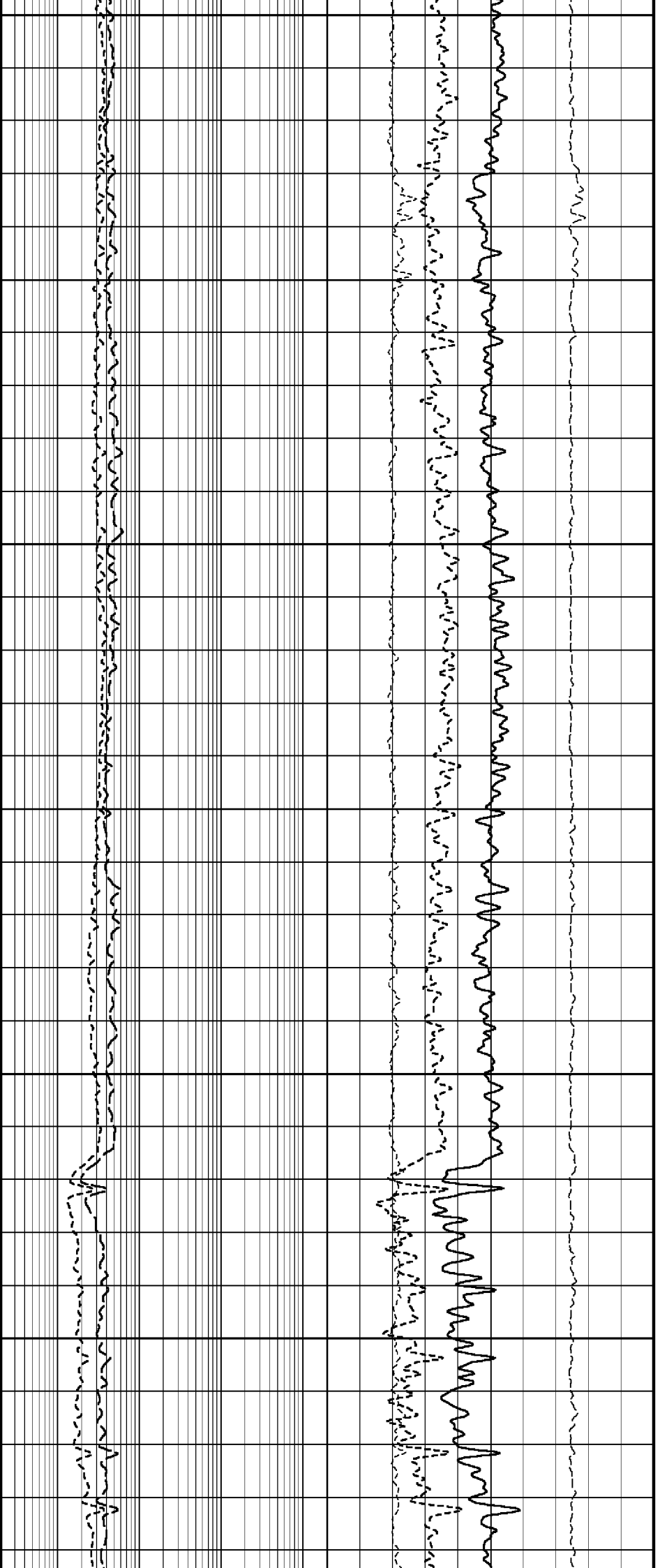
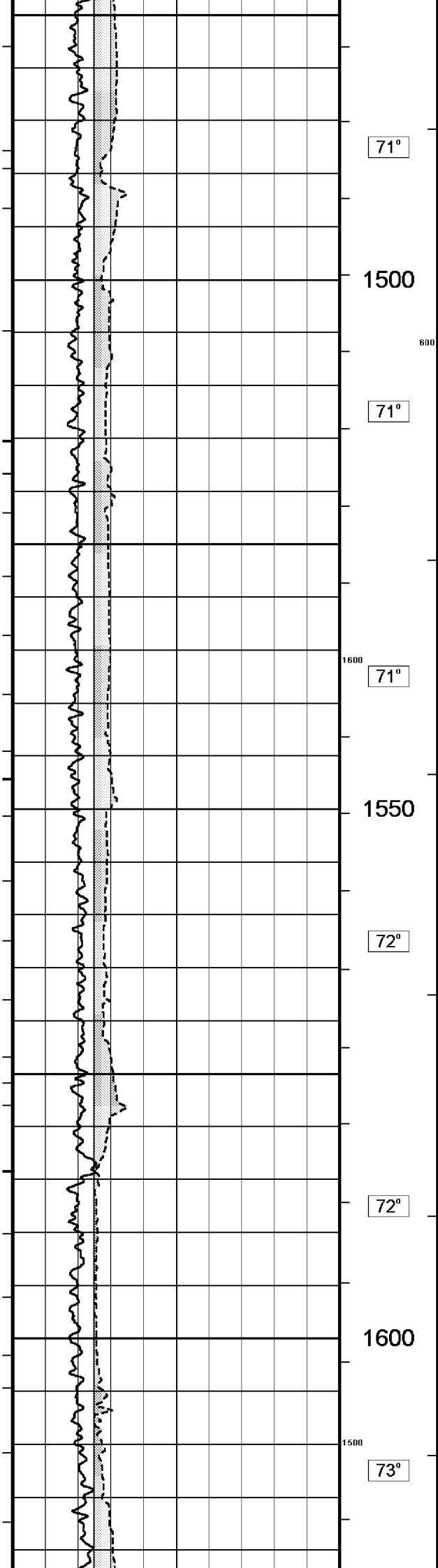




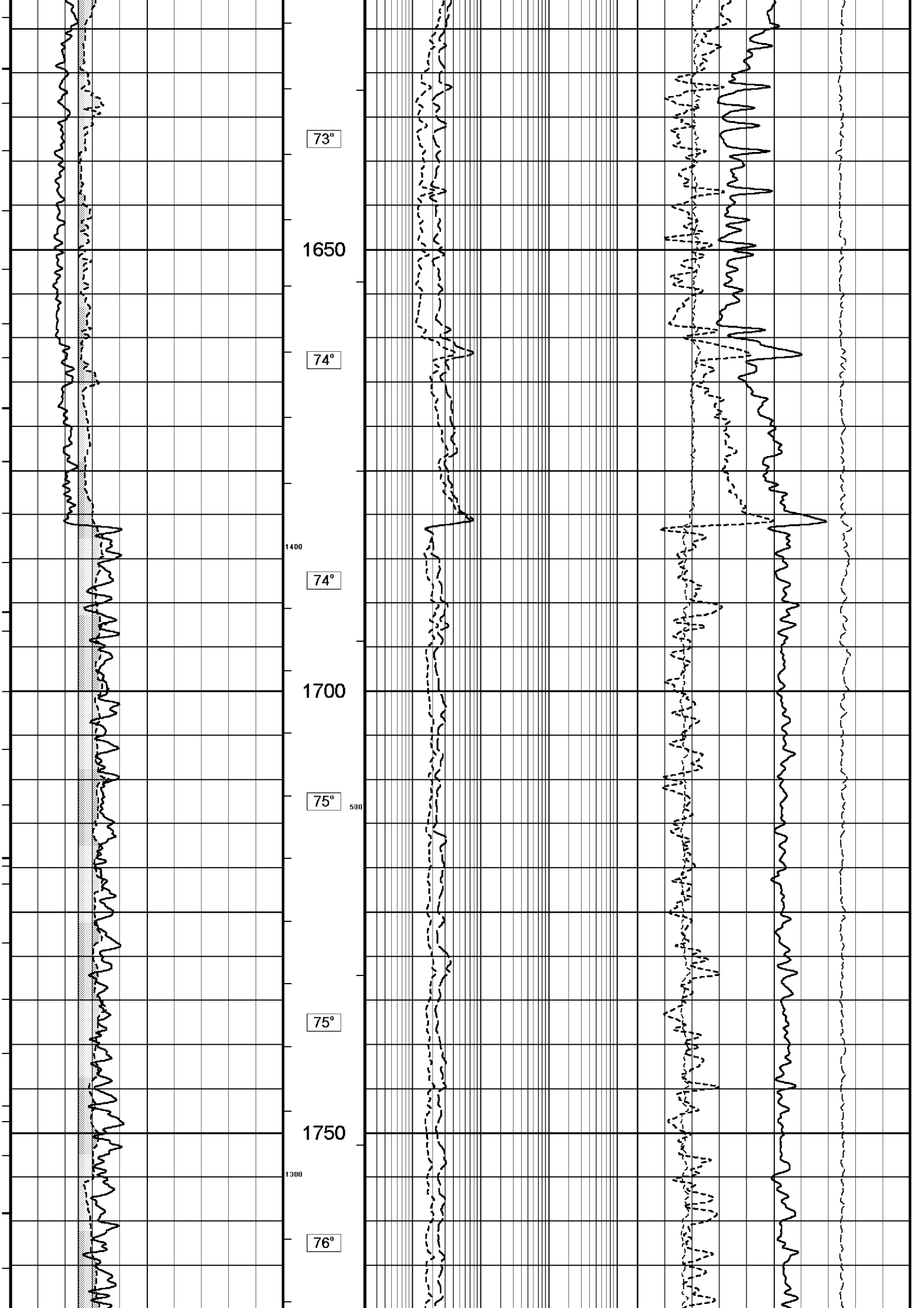


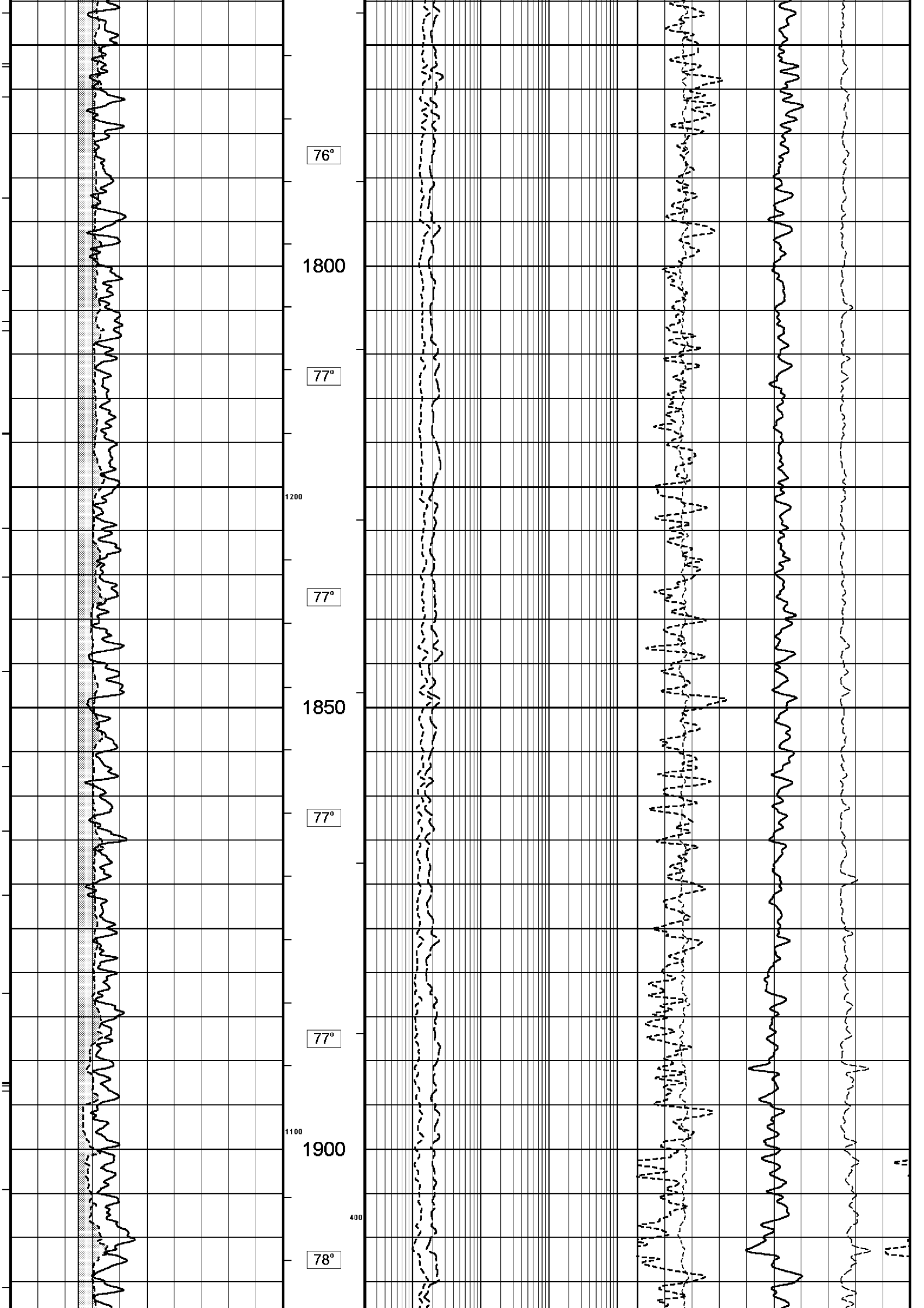


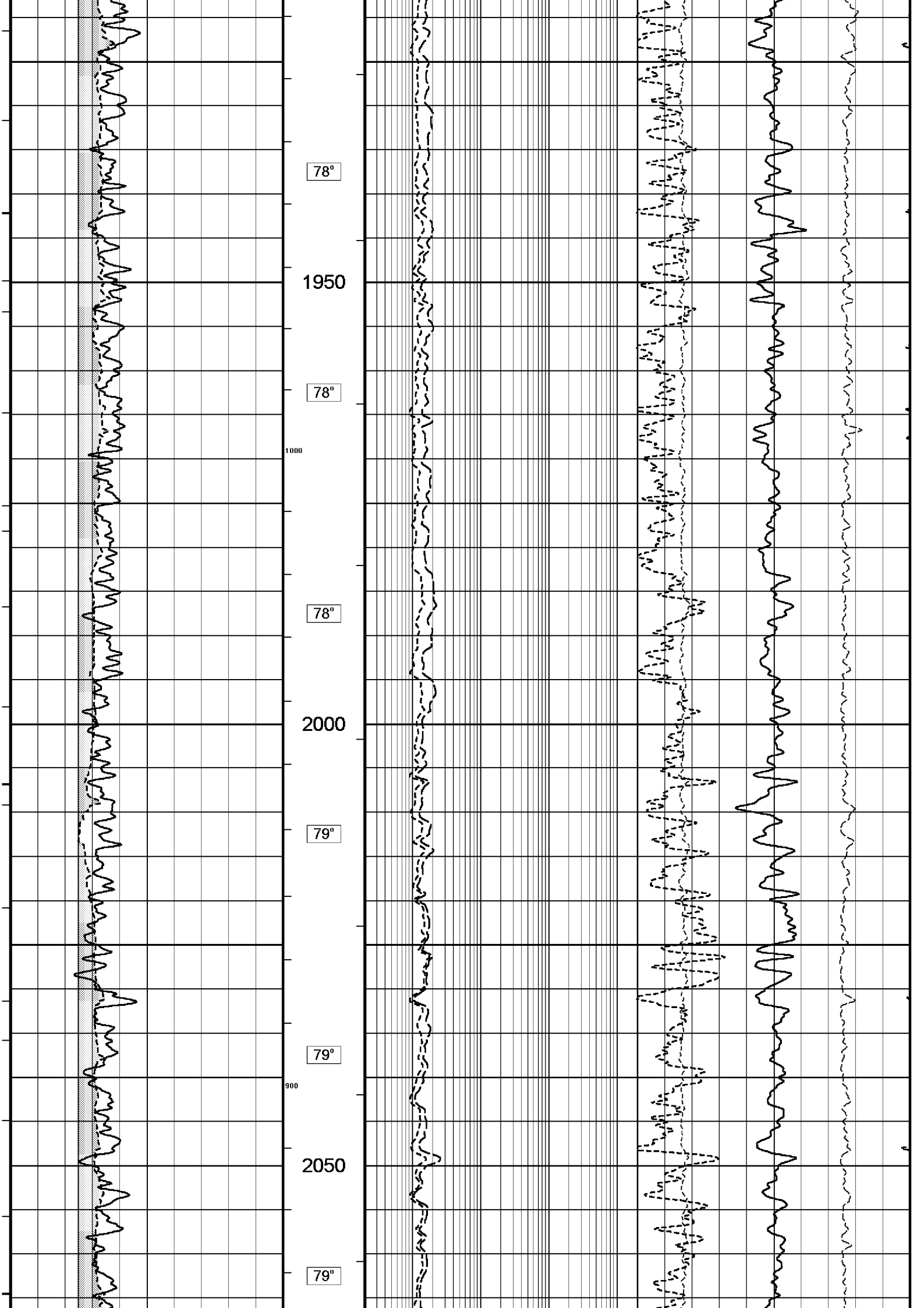


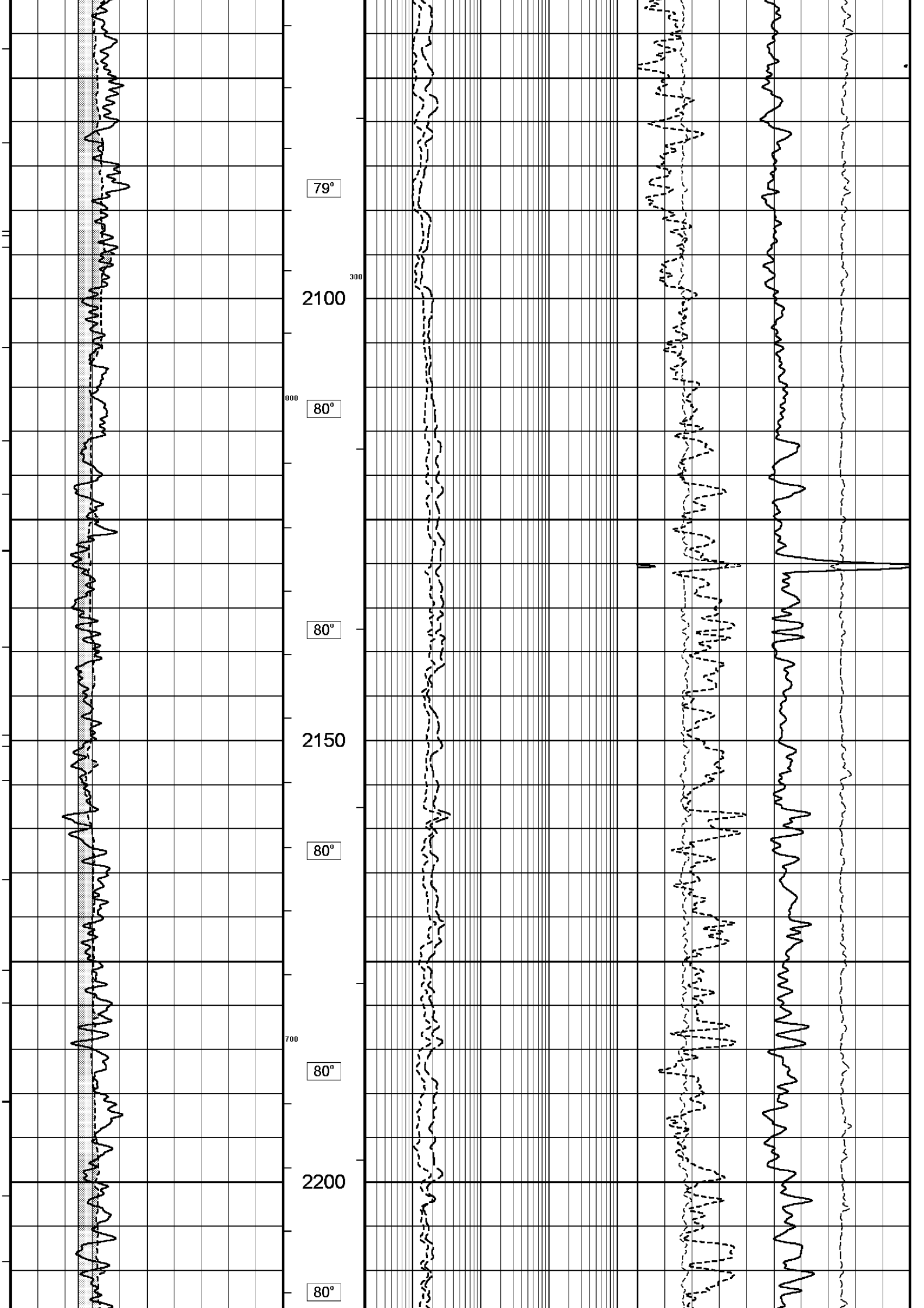


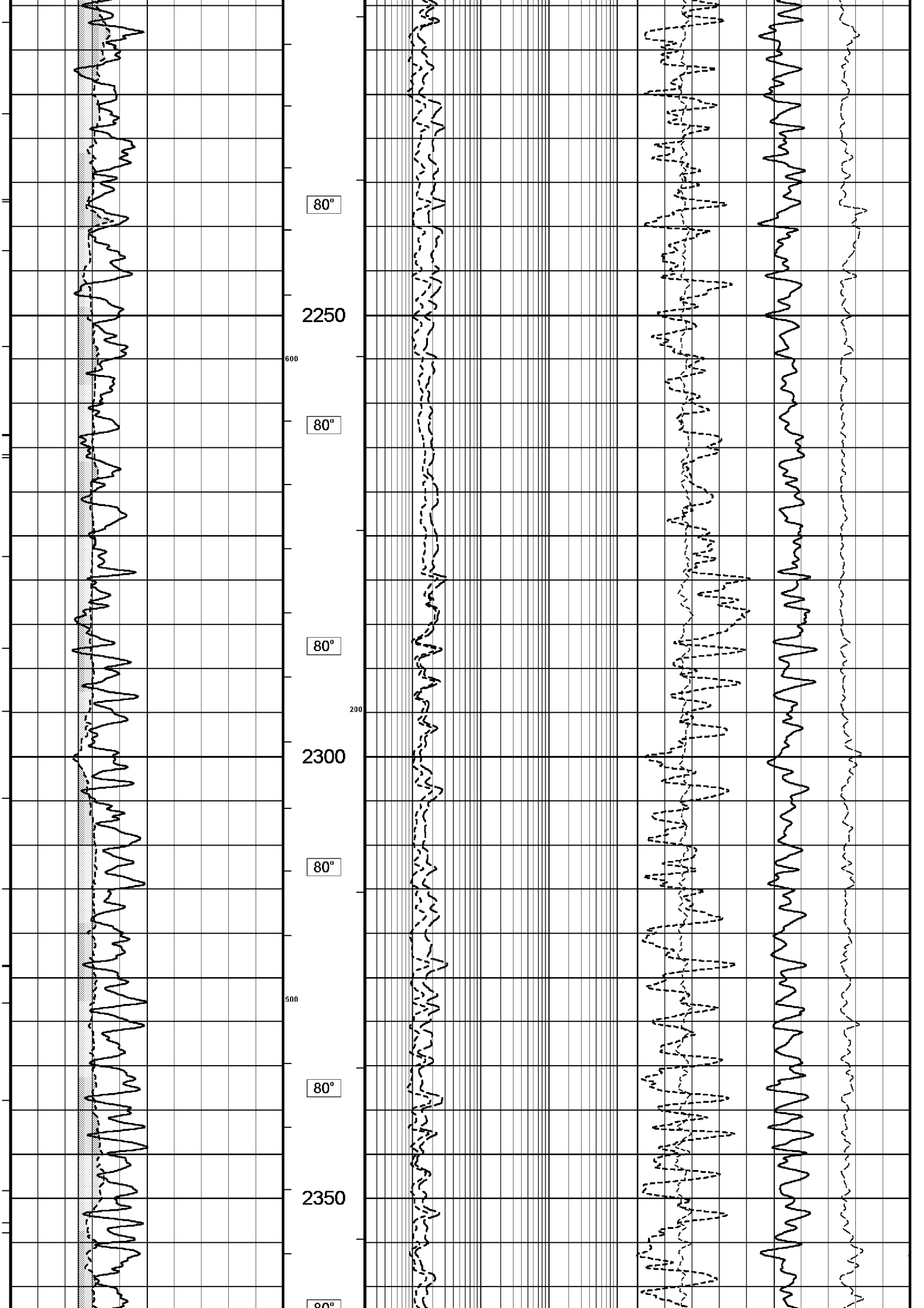


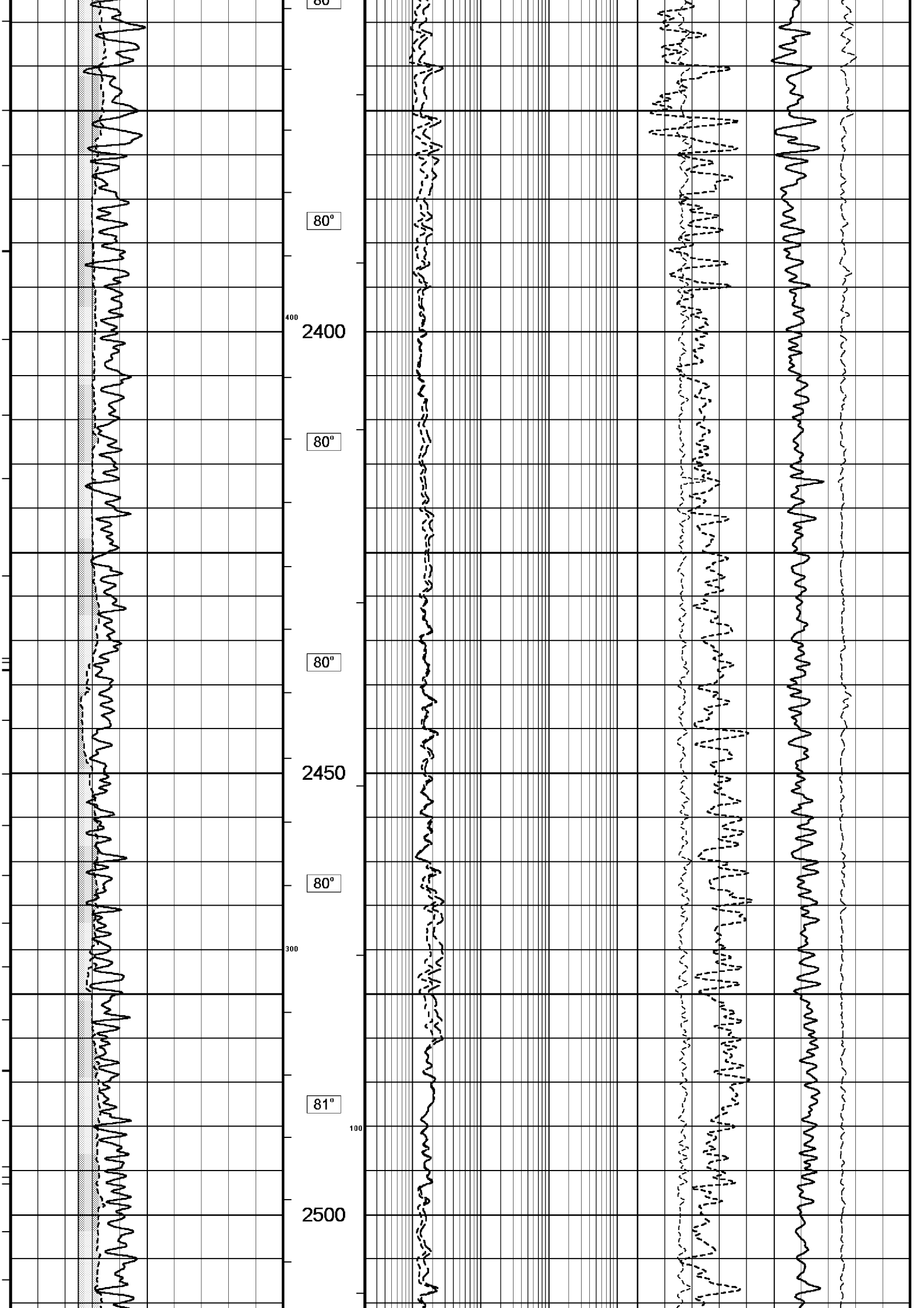


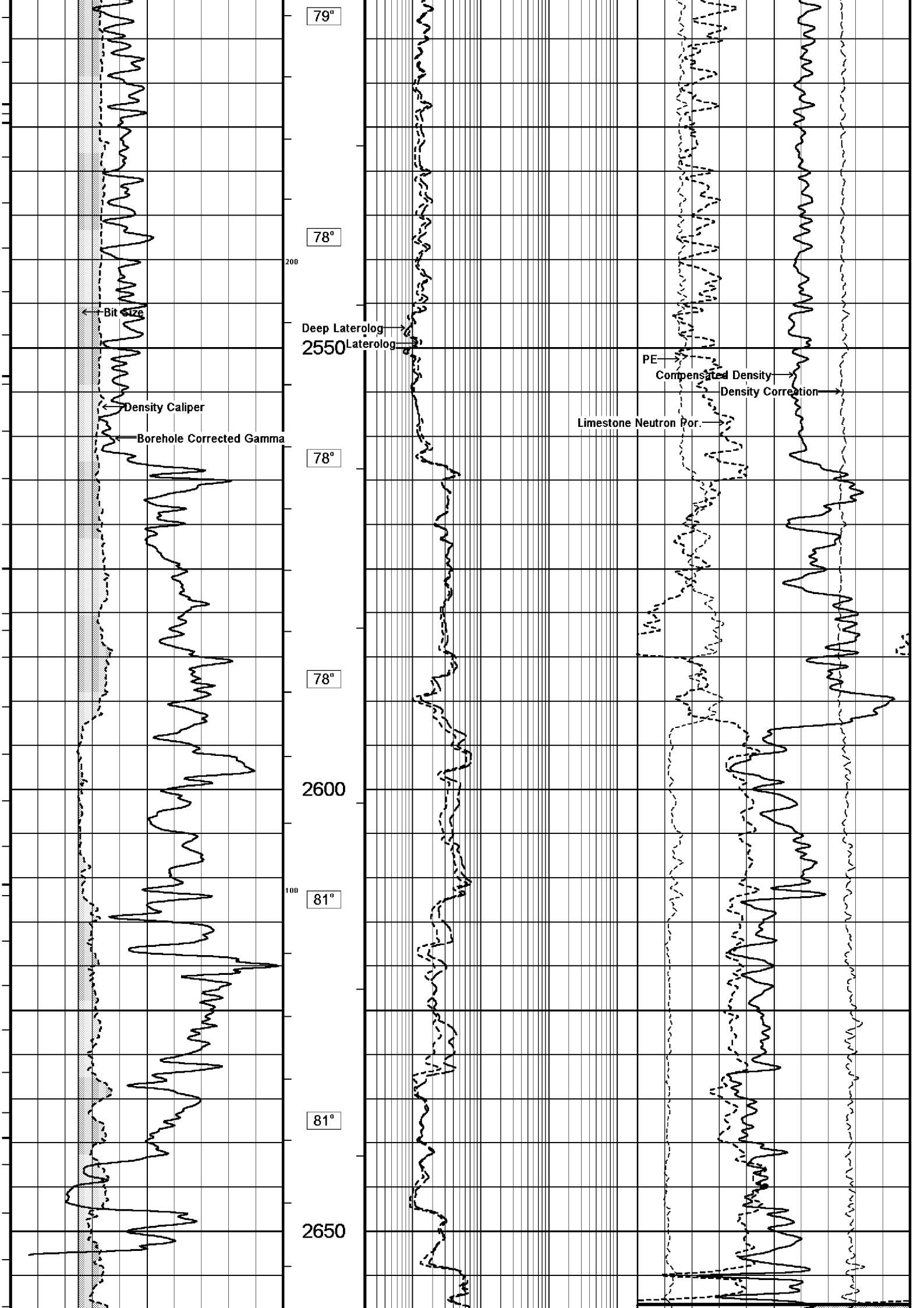


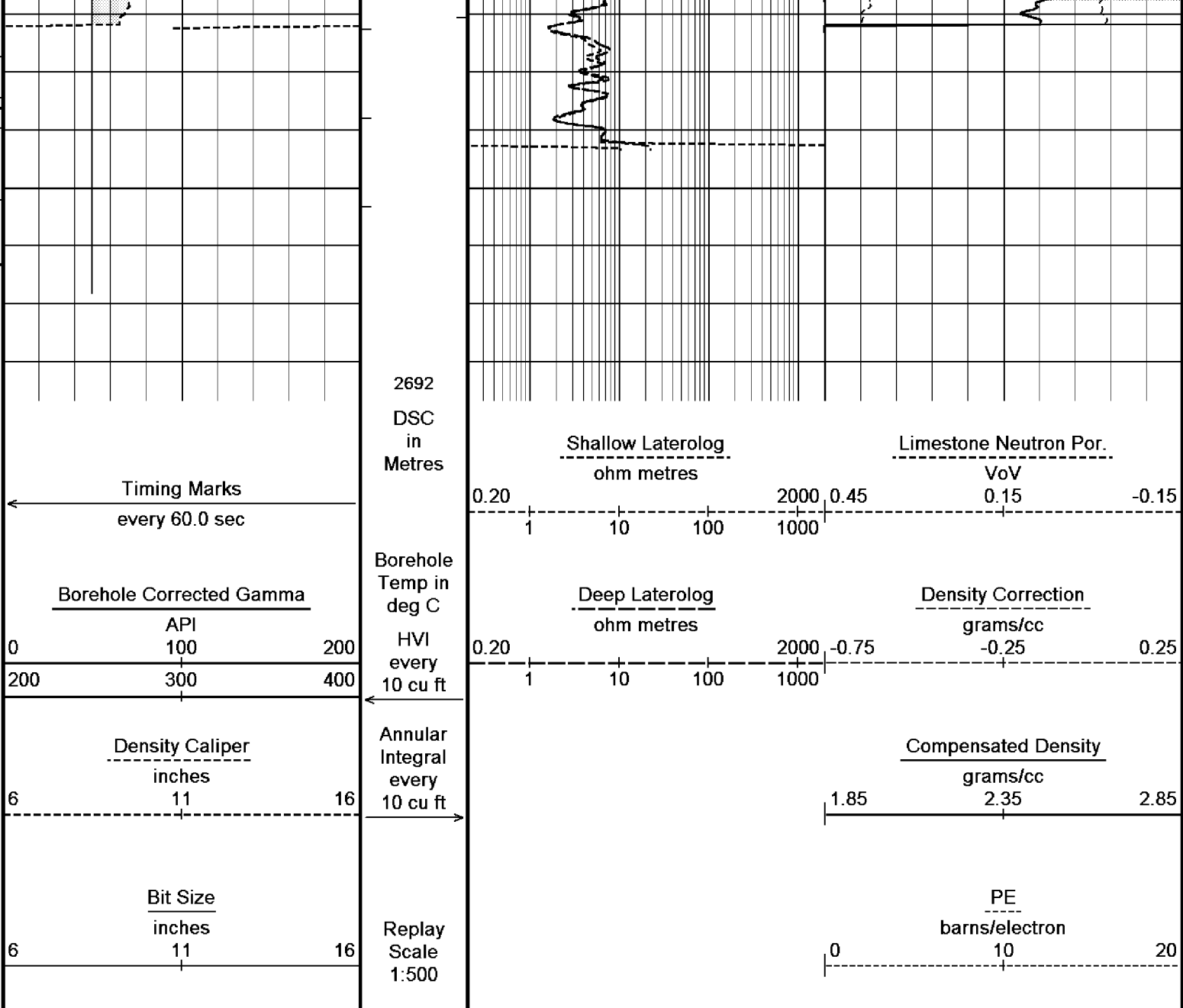












Depth Based Data - Maximum Sampling Increment 10.0cm  
Filename: C:\logs\WKF\_W19A\FIELD DATA\WKF\_W19A\_MAIN\_LOG.dta  
System Configuration Dates: Logged 17-JUN-2004: Processed 17-JUN-2004: Plotted 17-JUN-2004:

Plotted on 10-JUN-2006 11:44  
Recorded on 10-JUN-2006 04:30

MAIN LOG 1:500

BEFORE SURVEY CALIBRATION			
C:\logs\WKF_W19A\FIELD DATA\WKF_W19A_MAIN_LOG.dta			
General Constants All 000			
General Parameters			
Mud Resistivity	0.122	ohm-metres	
Mud Resistivity Temperature	25.000	degrees C	
Water Level	0.000	metres	
Density/Neutron Processing	Wet Hole		
Hole/Annular Volume and Differential Caliper Parameters			
HVOL Caliper 1	Density Caliper		
HVOL Caliper 2	Bit Size		
Annular Volume Diameter	7.000	inches	
Caliper for Differential Caliper	None		
Rwa Parameters			
Porosity used	Base Density Porosity		
Resistivity used	Deep Induction		
RWA Constant A	0.610		
RWA Constant M	2.150		



## High Resolution Temperature Calibration MCG 142

Field Calibration on 22-MAY-2006,23:42

	Measured	Calibrated(Deg C)
Lower	0.00	0.00
Upper	100.00	100.00

## High Resolution Temperature Constants MCG 142

Pre-filter Length	11
-------------------	----

## Gamma Calibration MCG 142

Field Calibration on 7-JUN-2006 23:40

	Measured	Calibrated (API)
Background	12	8
Calibrator (Gross)	1393	917
Calibrator (Net)	1381	909

## Gamma Constants MCG 142

Gamma Calibrator Number	60	
Mud Density	1.13	gm/cc
Caliper Source for Processing	Density Caliper	
Tool Position	Eccentred	
Concentration of KCl	0.00	kppm

## Neutron Calibration MDN 085

Base Calibration on 1-JUN-2006 14:00

Field Check on 8-JUN-2006 01:26

## Base Calibration

	Measured		Calibrated (cps)	
	Near	Far	Near	Far
	3121	97	3714	110
Ratio	32.033		33.764	

## Field Calibrator at Base

	Calibrated (cps)	
	1457	2120
Ratio	0.687	

## Field Check

	Calibrated (cps)	
	1449	2113
Ratio	0.686	

## Neutron Constants MDN 085

Neutron Source Id	NSN-E-739	
Neutron Jig Number	NEC-E-052	
Epithermal Neutron	No	
Caliper Source for Processing	Bit Size	
Stand-off	0.00	inches
Mud Density	1.13	gm/cc
Limestone Sigma	7.10	cu
Sandstone Sigma	4.26	cu
Dolomite Sigma	4.70	cu
Formation Pressure Source	None	
Formation Pressure	N/A	kpsi
Temperature Source	MCG External Temperature	
Temperature	N/A	degrees C
Mud Salinity	0.00	kppm
Formation Fluid Salinity Source	None	
Formation Fluid Salinity	N/A	kppm
Barite Mud Correction	Not Applied	

## Caliper Calibration MPD 083

Base Calibration on 31-MAY-2006 16:59

Field Calibration on 8-JUN-2006 01:20

## Base Calibration

Reading No	Measured	Calibrator Size (in)
1	14224	4.01
2	22476	5.99
3	30896	7.98
4	39296	9.94
5	48692	12.01
6	N/A	N/A

## Field Calibration

Measured Caliper (in)	Actual Caliper (in)
7.92	7.98

## Photo Density Calibration MPD 083

Base Calibration on 31-MAY-2006 17:21

Density Calibration		Measured		Calibrated (sdu)	
Base Calibration		Near	Far	Near	Far
Reference 1	55199	18450	53111	19310	
Reference 2	25968	2457	24951	2530	
Field Check at Base					
	943.5	1085.5			
Field Check					
	940.2	1083.2			

PE Calibration		Measured		Calibrated	
Base Calibration		WS	WH	Ratio	Ratio
Background	178	808			
Reference 1	17485	55005	0.319	0.320	
Reference 2	6890	25822	0.268	0.273	
Field Check at Base					
	178.4	807.6			
Field Check					
	176.2	805.7			

## Density Constants MPD 083

Density Source Id	NSDL 242	
Nylon Calibrator Number	DNC-D-536	
Aluminium/Fe Calibrator Number	DAC-D-536	
Density Shoe Profile	4 inch	
Caliper Source for Processing	Density Caliper	
PE Correction to Density	Not Applied	
Mud Density	1.13	gm/cc
Mud Density Z/A Correction	1.11	
Mud Filtrate Density	1.00	gm/cc
Dry Hole Mud Filtrate Density	1.00	gm/cc
DNCT	0.00	gm/cc
CRCT	0.00	gm/cc
Matrix Density (gm/cc)	Depth (m)	
2.71	0.00	
0.00	0.00	
0.00	0.00	
0.00	0.00	
0.00	0.00	
0.00	0.00	
0.00	0.00	
0.00	0.00	

## Laterolog Calibration MLE 031

Base Calibration on 31-MAY-2006,16:09

Field Check on 7-JUN-2006,23:41

Base Calibration		Measured		Calibrated (ohm-m)	
Channel	Resistor 1	Resistor 2	Resistor 1	Resistor 2	
Shallow	9.8	976.1	13.2	1321.0	
Deep	9.8	976.4	7.5	755.0	
Groningen	9.8	976.6	8.5	854.0	
Channel	Base Check (ohm-m)		Field Check (ohm-m)		
Shallow	48.6		48.6		
Deep	27.8		27.8		
Groningen	251.6		251.6		

## Laterolog Constants MLE 031

Squasher Start	40000	ohm-m
Shallow Laterolog K Factor	1.3210	
Deep Laterolog K Factor	0.7550	
Groningen Laterolog K Factor	0.8540	
Interference Rejection	50 Hz	
SP Connection	SP Bridle Electrode	
Groningen Connection	None	

## DOWNHOLE EQUIPMENT

C:\logs\WKF\_W19A\FIELD DATA\WKF\_W19A\_MAIN\_LOG.dta

Compact Swivel Head Adaptor F

SHA 71    Length: 0.83 m    Weight: 26.5 lb

Compact Knuckle Joint

SKJ 100    Length: 0.66 m    Weight: 24.3 lb

Compact Battery Sub.

MBS 99    Length: 4.41 m    Weight: 44.1 lb

Compact Inline Standoff B

MIS 73    Length: 0.65 m    Weight: 15.4 lb

Compact Stiff Bridle Electrode Sub.

MBE 18    Length: 3.76 m    Weight: 94.8 lb

Compact Inline Standoff B

MIS 138    Length: 0.65 m    Weight: 15.4 lb

Compact Stiff Bridle Electrode Sub.

MBE 19    Length: 3.76 m    Weight: 94.8 lb

Compact Inline Standoff B

MIS 136    Length: 0.65 m    Weight: 15.4 lb

MBE21 - THIRD BRIDLE

MLK 111    Length: 3.76 m    Weight: 30.9 lb

Compact Inline Standoff B

MIS 133    Length: 0.65 m    Weight: 15.4 lb

Compact Gamma

MCG 142    Length: 2.65 m    Weight: 63.9 lb

32.22 m

GGCE - Borehole Corrected Gamma

31.33 m

CGXT - MCG External Temperature

Compact Memory Sub A.C

MMS 38    Length: 0.95 m    Weight: 30.9 lb

Compact Knuckle Joint  
SKJ 45    Length: 0.66 m    Weight: 24.3 lb

Compact Swivel Head Adaptor F  
SHA 64    Length: 0.83 m    Weight: 26.5 lb

Compact Inline Bowspring A  
MIS 94    Length: 1.74 m    Weight: 33.1 lb

Compact Neutron  
MDN 85    Length: 1.53 m    Weight: 50.7 lb

Compact Density/Caliper  
MPD 83    Length: 2.92 m    Weight: 90.4 lb

Compact Inline Bowspring A  
MIS 24    Length: 1.74 m    Weight: 33.1 lb

Compact Swivel Head Adaptor  
SHA 28    Length: 0.83 m    Weight: 26.5 lb

Compact Knuckle Joint  
SKJ 110    Length: 0.66 m    Weight: 24.3 lb

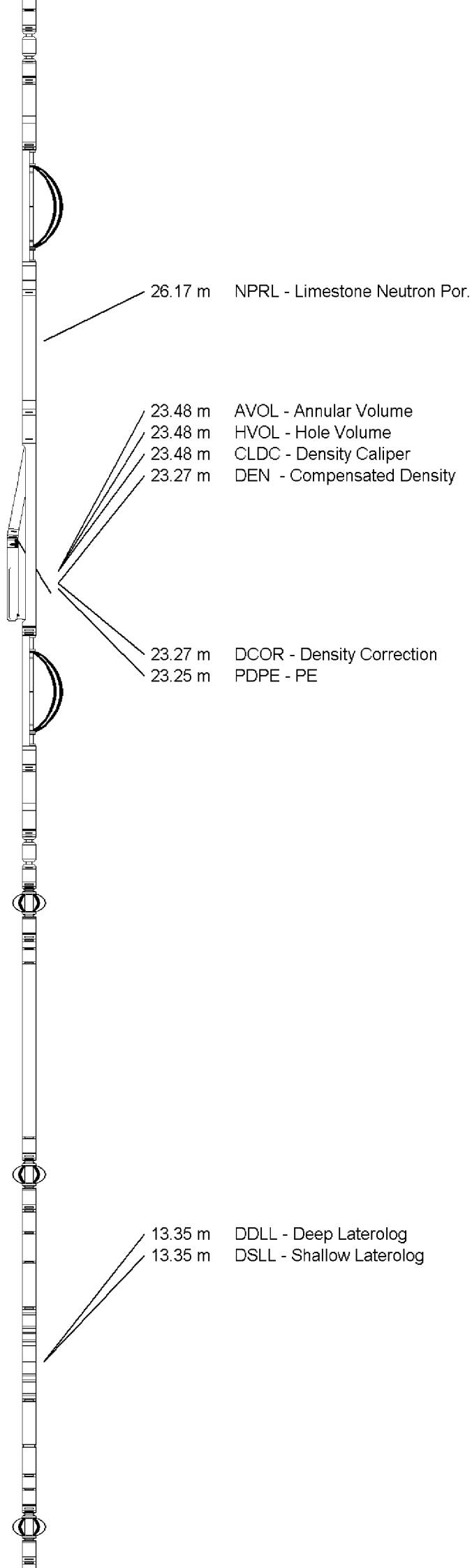
Compact Inline Standoff B  
MIS 72    Length: 0.65 m    Weight: 15.4 lb

Compact Upper Guard Sub.  
MUG 30    Length: 2.74 m    Weight: 68.3 lb

Compact Inline Standoff B  
MIS 141    Length: 0.65 m    Weight: 15.4 lb

Compact Laterolog Electrode Sub.  
MLE 31    Length: 3.76 m    Weight: 92.6 lb

Compact Inline Standoff B  
MIS 127    Length: 0.65 m    Weight: 15.4 lb



Compact Lower Guard Sub.  
MLG 7 Length: 2.44 m Weight: 55.1 lb

Compact Inline Standoff B  
MIS 129 Length: 0.65 m Weight: 15.4 lb

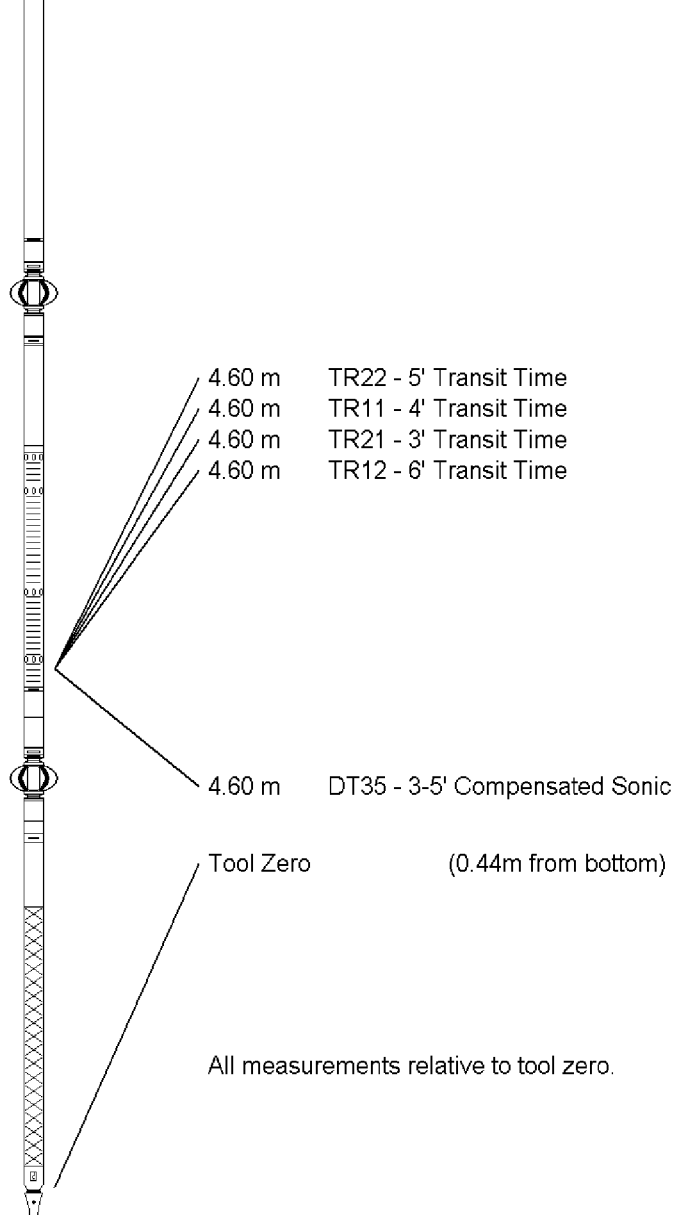
Compact Sonic  
MSS 66 Length: 3.82 m Weight: 72.8 lb

Compact Inline Standoff B  
MIS 126 Length: 0.65 m Weight: 15.4 lb

Compact Induction  
MAI 39 Length: 3.29 m Weight: 48.5 lb

Pressure Bung + Hole Finder  
HFS 4 Length: 0.40 m Weight: 6.6 lb

Total Length: 54.01 m Weight: 1201.5 lb



COMPANY	ESSO AUSTRALIA PTY.LTD
WELL	WKF W19A
FIELD	KINGFISH GDA94
PROVINCE/COUNTY	BASS STRAIT, VICTORIA
COUNTRY/STATE	AUSTRALIA

Elevation Kelly Bushing	metres	First Reading	2670.65	metres	
Elevation Drill Floor	33.43	metres	Depth Driller	2687.00	metres
Elevation Ground Level	-76.13	metres	Depth Logger	2684.00	metres



DUAL LATEROLOG - GR  
DENSITY - NEUTRON  
1:500 MD